

PART NW 1/4 SEC. 23, T5N, R2W, S.L.B. & M.  
BURMONT PARK SUBDIVISION

UNIT NO. 2

LOTS 81 TO 95

ROY CITY

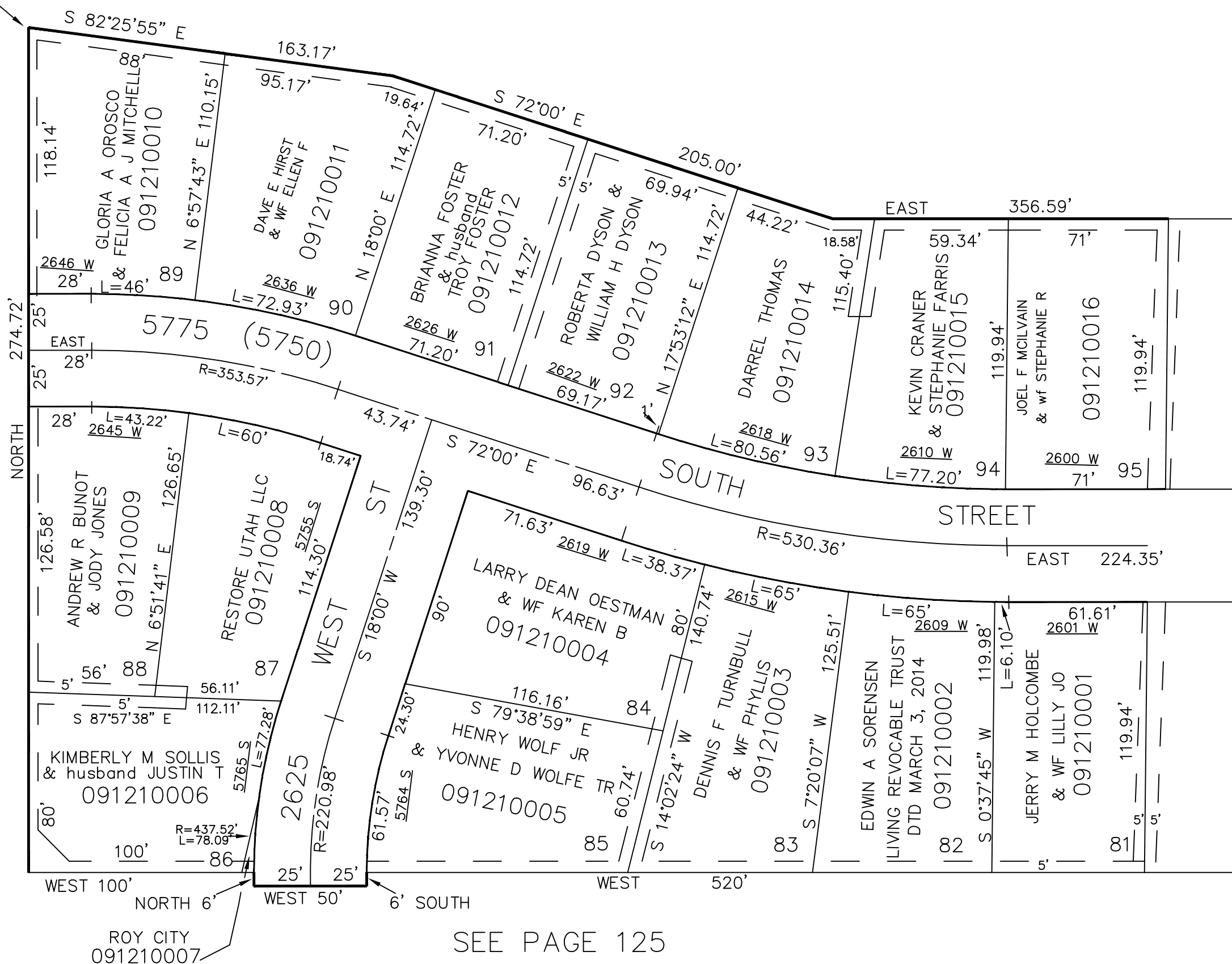
SCALE 1" TO 50'

TAXING UNIT: 41

SEE PAGE 119

POINT OF BEGINNING  
SOUTH 945.28' AND  
EAST 300' FROM NW  
COR OF SEC 23

SEE PAGE 122



SEE PAGE 120

SEE PAGE 125

FOR COMPLETE ENG. DATA  
SEE ORIGINAL DED. PLAT  
IN BOOK 12 PAGE 34 OF RECORDS.

5' UTILITY & DRAINAGE EASEMENTS  
EACH SIDE OF PROPERTY LINES AS  
INDICATED BY DASHED LINES  
EXCEPT AS OTHERWISE SHOWN.